

RoHS

**CUST INFORMATION.**

PART NO. NA	DRAWING NO. NA	REV. NA
----------------	-------------------	------------

Specifications:

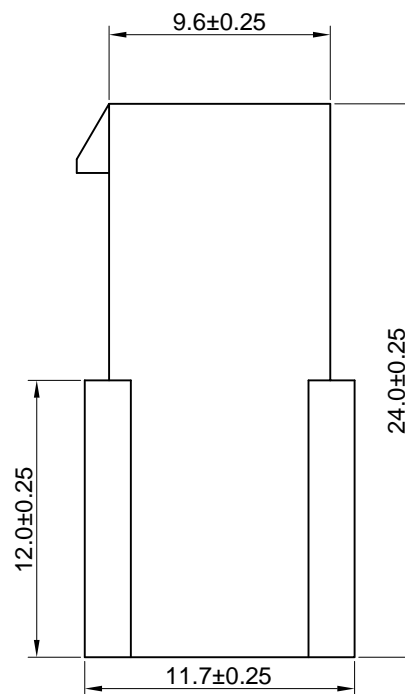
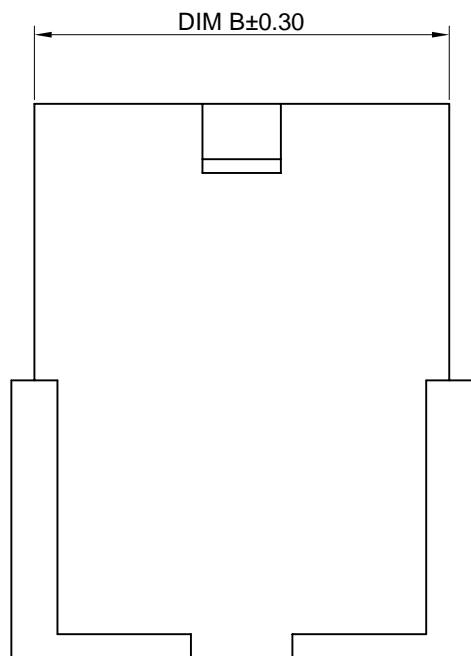
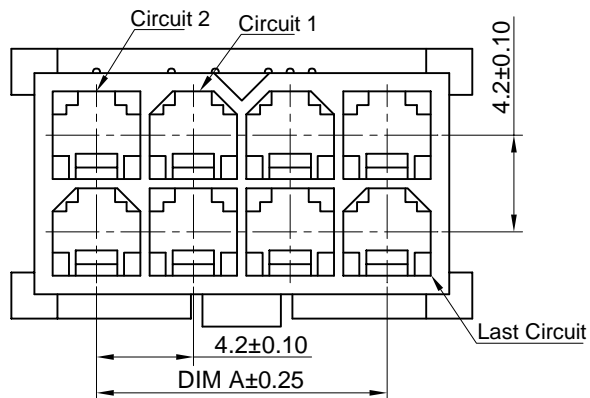
- 1.Current rating:9A AC,DC
- 2.Voltage rating:600V AC,DC
- 3.Temperature range:-40°C~+105°C
- 4.Contact resistance:10mΩMax.
- 5.Insulation resistance:1000MΩMin.
- 6.Withstanding voltage:1500V AC/minute
- 7.Material:PA66 UL94V-0/2
- 8.Bill Of Part No.:

FU4202HW-2xXP-X-HF

Pin:	Material Color
2	A : White
3	B : Black
4	C : Red
.	D : Orangr
.	E : Yellow
.	F : Green

9.Ordering Information & Dimensions

51.60	46.20	2x12	26.40	21.00	2x6
47.40	42.00	2x11	22.20	16.80	2x5
43.20	37.80	2x10	18.00	12.60	2x4
39.00	33.60	2x9	13.80	8.40	2x3
34.80	29.40	2x8	9.60	4.20	2x2
30.60	25.20	2x7	5.40	---	2x1
DIM B	DIM A	PIN	DIM B	DIM A	PIN



<b>TOLERANCE</b>		<b>PART NO.</b>		东莞市福朗连接器制造有限公司 DongGuan FuLang Connector Manufacturing Co., LTD		
X. X.X ±0.30 X.XX ±0.20	X.XXX ±0.1 Angular ±2°	FU4202H-2xXP-X-HF				
		<b>DRAWING NO.</b>		TITLE. 4.2mm Mini Fit Dual Row Plug Housing		
UNIT: mm		C-FU4202H-2xXP-X-HF				
<b>DWG TYPE.</b>		<b>APPROVED BY</b>	<b>CHECKED BY</b>	<b>DRAWN BY</b>	<b>PAGE</b>	<b>REV.</b>
<b>Customer Drawing</b>					1 OF 1	A
					<b>SCALE</b>	
					5: 1	

A		For New Drawing	GuobaoLi	2018.01.02
<b>REV.</b>	<b>ECN NO</b>	<b>REVISION RECORD</b>	<b>DRAW</b>	<b>DATE</b>

RoHS

**CUST INFORMATION.**

PART NO. NA	DRAWING NO. NA	REV. NA
----------------	-------------------	------------

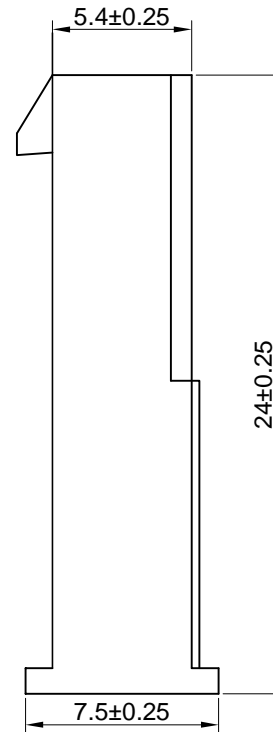
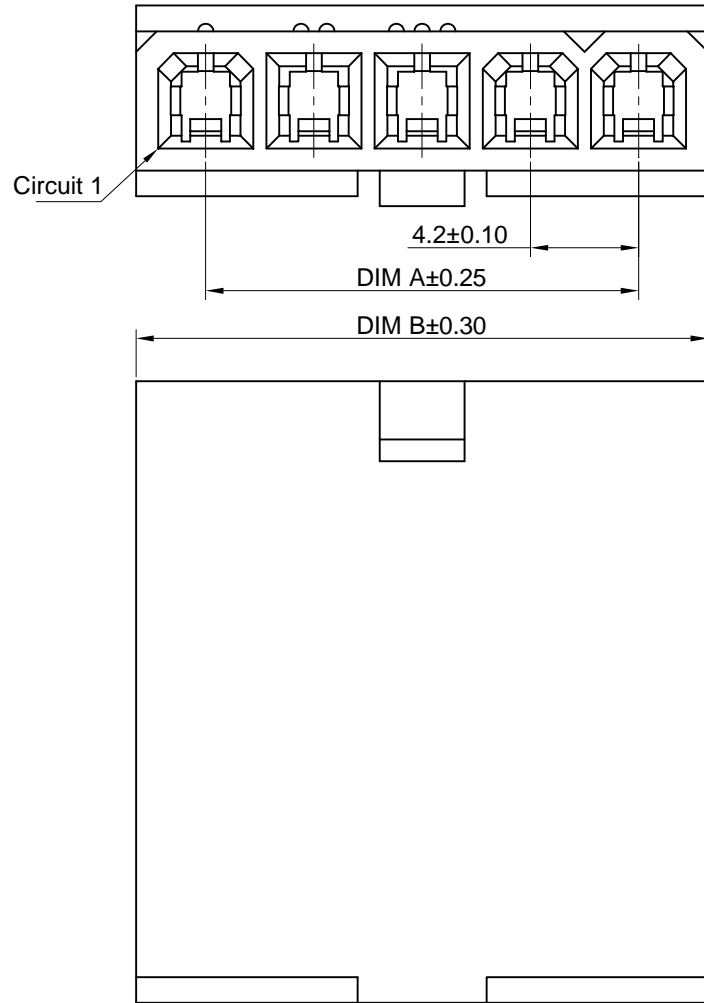
- Specifications:
- 1.Current rating:9A AC,DC
  - 2.Voltage rating:600V AC,DC
  - 3.Temperature range:-40°C~+105°C
  - 4.Contact resistance:10mΩMax.
  - 5.Insulation resistance:1000MΩMin.
  - 6.Withstanding voltage:1500V AC/minute
  - 7.Material:PA66 UL94V-0/2
  - 8.Bill Of Part No.:

FU4202H-XP-X-HF

Pin: _____	Material Color
2	A : White
3	B : Black
4	C : Red
.	D : Orangr
.	E : Yellow
.	F : Green

A  
B  
C  
D

A  
B  
C  
D



9.Ordering Information & Dimensions

			30.60	25.20	7
51.60	46.20	12	26.40	21.00	6
47.40	42.00	11	22.20	16.80	5
43.20	37.80	10	18.00	12.60	4
39.00	33.60	9	13.80	8.40	3
34.80	29.40	8	9.60	4.20	2
DIM B	DIM A	PIN	DIM B	DIM A	PIN

<b>TOLERANCE</b>		<b>PART NO.</b> FU4202H-XP-X-HF		<b>东莞市福朗连接器制造有限公司</b> <b>DongGuan FuLang Connector Manufacturing Co., LTD</b>	
X. X.X ±0.30 X.XX ±0.20	X.XXX ±0.1 <b>Angular ±2°</b>	<b>DRAWING NO.</b> C-FU4202H-XP-X-HF		<b>TITLE.</b> 4.2mm Mini Fit Series Plug Single Row Housing	
		<b>UNIT:</b> mm	<b>APPROVED BY</b>	<b>CHECKED BY</b>	<b>DRAWN BY</b>
<b>DWG TYPE.</b> <b>Customer Drawing</b>			<b>PAGE</b> 1OF1		<b>REV.</b> A
			<b>SCALE</b> 5: 1		

A		For New Drawing	GuobaoLi	2018.01.02
<b>REV.</b>	<b>ECN NO</b>	<b>REVISION RECORD</b>	<b>DRAW</b>	<b>DATE</b>

RoHS

**CUST INFORMATION.**

PART NO. NA	DRAWING NO. NA	REV. NA
----------------	-------------------	------------

Specifications:

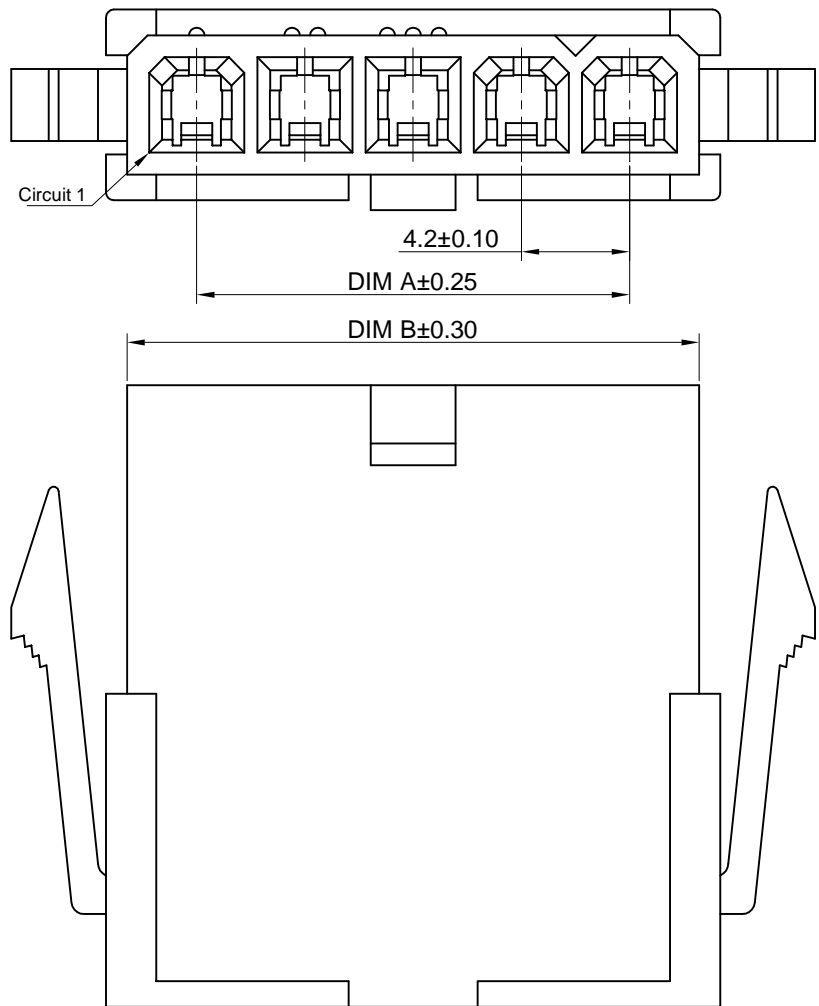
- 1.Current rating:9A AC,DC
- 2.Voltage rating:600V AC,DC
- 3.Temperature range:-40°C~+105°C
- 4.Contact resistance:10mΩMax.
- 5.Insulation resistance:1000MΩMin.
- 6.Withstanding voltage:1500V AC/minute
- 7.Material:PA66 UL94V-0/2
- 8.Bill Of Part No.:

FU4202HW-XP-X-HF

Pin: 1	Material Color
2	A : White
3	B : Black
4	C : Red
.	D : Orangr
.	E : Yellow
.	F : Green

9.Ordering Information & Dimensions

			30.60	25.20	7
51.60	46.20	12	26.40	21.00	6
47.40	42.00	11	22.20	16.80	5
43.20	37.80	10	18.00	12.60	4
39.00	33.60	9	13.80	8.40	3
34.80	29.40	8	9.60	4.20	2
DIM B	DIM A	PIN	DIM B	DIM A	PIN



<b>TOLERANCE</b>		<b>PART NO.</b> FU4202HW-XP-X-HF		<b>东莞市福朗连接器制造有限公司</b> <b>DongGuan FuLang Connector Manufacturing Co., LTD</b>	
X.	X.XXX ±0.1	<b>DRAWING NO.</b> C-FU4202HW-XP-X-HF		<b>TITLE.</b> 4.2mm Mini Fit Series Plug Single Row Housing	
X.X ±0.30		<b>UNIT:</b> mm		<b>APPROVED BY</b>	
X.XX ±0.20	Angular ±2°	<b>DWG TYPE.</b> Customer Drawing		<b>CHECKED BY</b>	
		<b>DRAWN BY</b>		<b>PAGE</b> 1OF1	
				<b>SCALE</b> 5: 1	
				<b>REV.</b> A	

A		For New Drawing	GuobaoLi	2018.01.02
<b>REV.</b>	<b>ECN NO</b>	<b>REVISION RECORD</b>	<b>DRAW</b>	<b>DATE</b>

RoHS

**CUST INFORMATION.**

PART NO. NA	DRAWING NO. NA	REV. NA
----------------	-------------------	------------

Specifications:

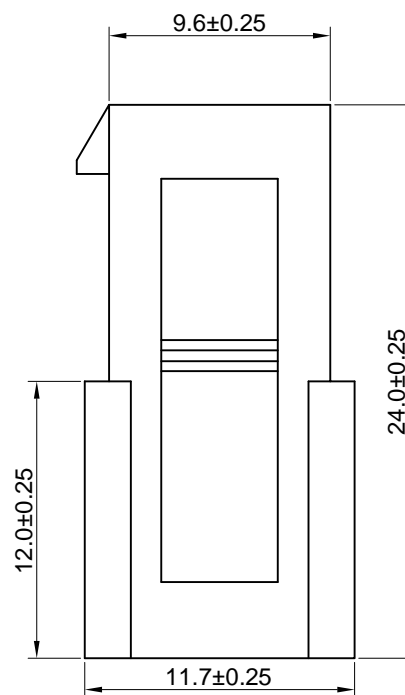
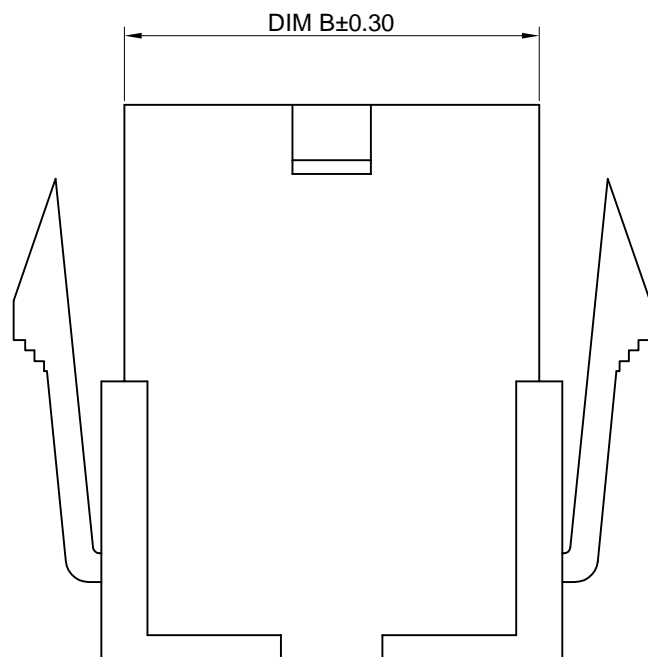
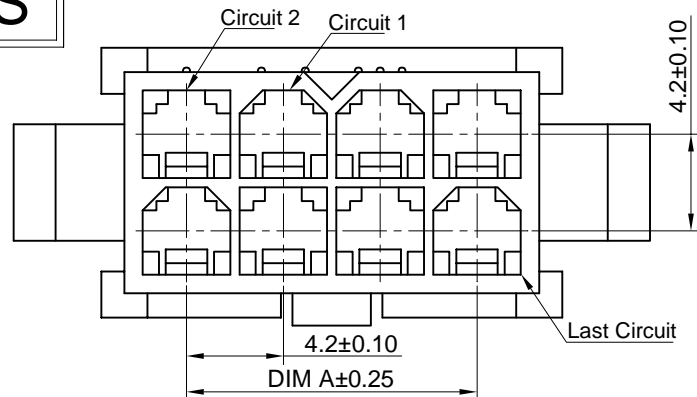
- 1.Current rating:9A AC,DC
- 2.Voltage rating:600V AC,DC
- 3.Temperature range:-40°C~+105°C
- 4.Contact resistance:10mΩMax.
- 5.Insulation resistance:1000MΩMin.
- 6.Withstanding voltage:1500V AC/minute
- 7.Material:PA66 UL94V-0/2
- 8.Bill Of Part No.:

FU4202HW-2xXP-X-HF

Pin:	Material Color
2	A : White
3	B : Black
4	C : Red
.	D : Orangr
.	E : Yellow
.	F : Green

9.Ordering Information & Dimensions

51.60	46.20	2x12	26.40	21.00	2x6
47.40	42.00	2x11	22.20	16.80	2x5
43.20	37.80	2x10	18.00	12.60	2x4
39.00	33.60	2x9	13.80	8.40	2x3
34.80	29.40	2x8	9.60	4.20	2x2
30.60	25.20	2x7	5.40	---	2x1
DIM B	DIM A	PIN	DIM B	DIM A	PIN



<b>TOLERANCE</b>		<b>PART NO.</b>		东莞市福朗连接器制造有限公司 DongGuan FuLang Connector Manufacturing Co., LTD		
X. X.X ±0.30 X.XX ±0.20	X.XXX ±0.1 Angular ±2°	FU4202HW-2xXP-X-HF				
		<b>DRAWING NO.</b>		TITLE. 4.2mm Mini Fit Dual Row Plug Housing		
UNIT: mm		C-FU4202HW-2xXP-X-HF				
<b>DWG TYPE.</b>		<b>APPROVED BY</b>	<b>CHECKED BY</b>	<b>DRAWN BY</b>	<b>PAGE</b>	<b>REV.</b>
<b>Customer Drawing</b>					1 OF 1	A
					<b>SCALE</b>	
					5: 1	

A		For New Drawing	GuobaoLi	2018.01.02
<b>REV.</b>	<b>ECN NO</b>	<b>REVISION RECORD</b>	<b>DRAW</b>	<b>DATE</b>