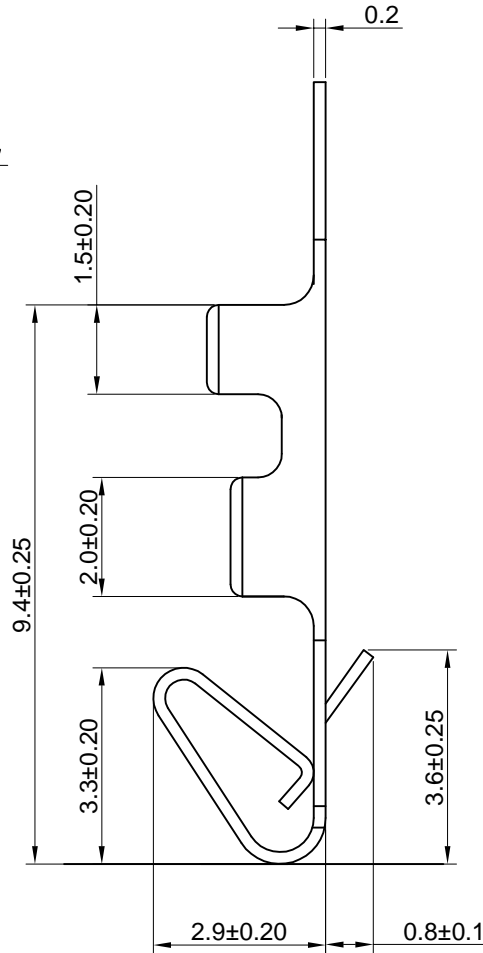
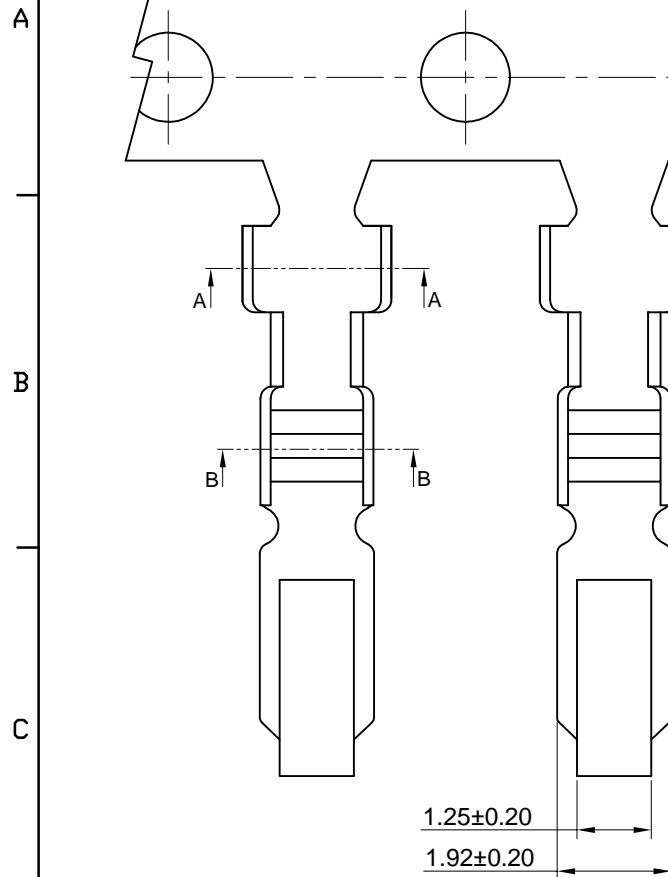


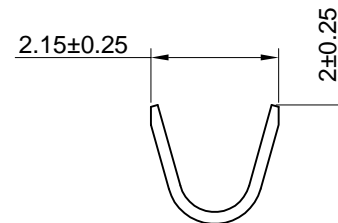
RoHS

**CUST INFORMATION.**

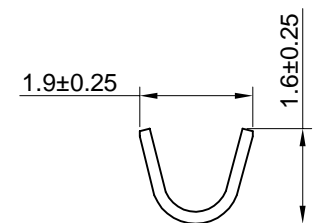
PART NO. NA	DRAWING NO. NA	REV. NA
----------------	-------------------	------------



- Specifications:
- 1.Current rating:4A AC,DC
  - 2.Voltage rating:250V AC,DC
  - 3.Temperature range:-40°C~+105°C
  - 4.Contact resistance:10mΩMax.
  - 5.Insulation resistance:1000MΩMin.
  - 6.Withstanding voltage:1000V AC/minute
  - 7.Spec. PLS. Refer To PS-FU2543



SEC:A-A



SEC:B-B

Part No.	Wire Range	Insulation O.D.	Material	Finish	Qty/reel
FU2543-T0P-B1	AWG#22~#28	1.9mm Max	Phosphor Bronze	Tin over Nickel	15000Pcs
FU2543-T0B-B1	AWG#22~#28	1.9mm Max	Brass	Tin over Nickel	15000Pcs

<b>TOLERANCE</b>		<b>PART NO.</b>		东莞市福朗连接器制造有限公司 DongGuan FuLang Connector Manufacturing Co., LTD		
X. X.XXX ±0.1	X.X ±0.30	FU2543-T0X-B1				
X.XX ±0.20	Angular ±2°	<b>DRAWING NO.</b>		TITLE.		
UNIT: mm		C-FU2543-T0X-B1				2.54mm Crimp Style Connectors
DWG TYPE.		APPROVED BY	CHECKED BY	DRAWN BY	PAGE	REV.
<b>Customer Drawing</b>					10F1	A
					SCALE	
					10:1	

A		For New Drawing	GuobaoLi	2017.12.20
REV.	ECN NO	REVISION RECORD	DRAW	DATE